

aluminium, acc. to A-A 59326 25.09.98 (formerly MIL - C 27487)

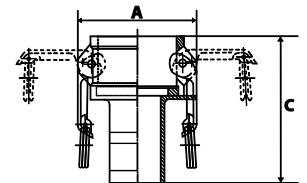
Coupling system for quick and easy connection of two hoses or for joining one hose to a machine connection.

A male part and a female part are joined together by shifting the handles.  
There is no need to turn the hose!

Kamlok couplings are used for a wide range of applications in industrial plant and mechanical engineering, tank and container construction, the chemical industry, food processing, mining, refuelling systems, defence technology, etc.

All Kamlok quick coupling boxes and Kamlok closure boxes are supplied with NBR seal.

Pressure range                      max. 16 bar  
Temperature range                -20 to 68 °C  
Sealant                                NBR, resistant to oils and benzine



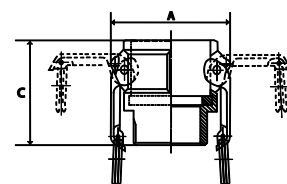
1112.20

### Kamlok female couplers with hose stem, Part C

| Art. No. | Ident No. | For hose I.D. | For plug Ø<br>mm | A<br>mm | C<br>mm |
|----------|-----------|---------------|------------------|---------|---------|
| 108026   | 1112.34   | 19            | 32               | 61.3    | 90.5    |
| 108027   | 1112.10   | 25            | 37               | 68.2    | 95.0    |
| 108028   | 1112.114  | 32            | 45               | 79.7    | 102.5   |
| 108029   | 1112.112  | 38            | 53               | 87.4    | 116.5   |
| 108030   | 1112.20   | 50            | 63               | 97.0    | 134.5   |
| 108031   | 1112.212  | 63            | 76               | 109.5   | 142.4   |
| 108032   | 1112.30   | 75            | 92               | 131.8   | 159.0   |
| 108033   | 1112.40   | 100           | 120              | 159.9   | 162.5   |

### Kamlok female couplers, male threaded, Part B

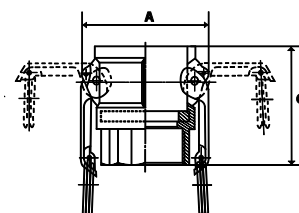
| Art. No. | Ident No. | Thread  | For plug Ø<br>mm | A<br>mm | C<br>mm |
|----------|-----------|---------|------------------|---------|---------|
| 108034   | 1113.34   | R 3/4   | 32               | 61.3    | 52.2    |
| 108035   | 1113.10   | R 1     | 37               | 68.2    | 59.0    |
| 108036   | 1113.114  | R 1 1/4 | 45               | 79.7    | 65.5    |
| 108037   | 1113.112  | R 1 1/2 | 53               | 87.4    | 69.5    |
| 108038   | 1113.20   | R 2     | 63               | 97.0    | 77.0    |
| 108039   | 1113.212  | R 2 1/2 | 76               | 109.5   | 84.5    |
| 108040   | 1113.30   | R 3     | 92               | 131.8   | 89.5    |
| 108041   | 1113.40   | R 4     | 120              | 159.9   | 92.0    |



1113.112

## Kamlok female couplers, female threaded, Part D

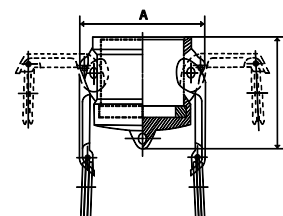
| Art. No. | Ident No. | Thread  | For plug Ø<br>mm | A<br>mm | C<br>mm |
|----------|-----------|---------|------------------|---------|---------|
| 108042   | 1114.34   | G 3/4   | 32               | 61.3    | 52.2    |
| 108043   | 1114.10   | G 1     | 37               | 68.2    | 59.0    |
| 108044   | 1114.114  | G 1 1/4 | 45               | 79.7    | 67.5    |
| 108045   | 1114.112  | G 1 1/2 | 53               | 87.4    | 69.5    |
| 108046   | 1114.20   | G 2     | 63               | 97.0    | 76.0    |
| 108047   | 1114.212  | G 2 1/2 | 76               | 109.5   | 84.5    |
| 108048   | 1114.30   | G 3     | 92               | 131.8   | 89.5    |
| 108049   | 1114.40   | G 4     | 120              | 159.9   | 92.0    |



1114.112

## Kamlok dust caps for male adapters, Part DC

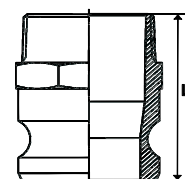
| Art. No. | Ident No. | Size  | For plug Ø<br>mm | A<br>mm | C<br>mm |
|----------|-----------|-------|------------------|---------|---------|
| 108050   | 1115.34   | 3/4   | 32               | 61.3    | 45.2    |
| 108051   | 1115.10   | 1     | 37               | 68.2    | 57.4    |
| 108052   | 1115.114  | 1 1/4 | 45               | 79.7    | 65.0    |
| 108053   | 1115.112  | 1 1/2 | 53               | 87.4    | 62.0    |
| 108054   | 1115.20   | 2     | 63               | 97.0    | 69.0    |
| 108055   | 1115.212  | 2 1/2 | 76               | 109.5   | 77.5    |
| 108056   | 1115.30   | 3     | 92               | 131.8   | 76.5    |
| 108057   | 1115.40   | 4     | 120              | 159.9   | 78.0    |



1115.20

## Kamlok male adapters, male threaded, Part F

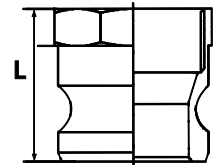
| Art. No. | Ident No. | Thread  | Plug Ø<br>mm | L<br>mm |
|----------|-----------|---------|--------------|---------|
| 108058   | 1116.34   | R 3/4   | 32           | 55.0    |
| 108059   | 1116.10   | R 1     | 37           | 67.8    |
| 108060   | 1116.114  | R 1 1/4 | 45           | 78.0    |
| 108061   | 1116.112  | R 1 1/2 | 53           | 76.0    |
| 108062   | 1116.20   | R 2     | 63           | 83.5    |
| 108063   | 1116.212  | R 2 1/2 | 76           | 97.0    |
| 108064   | 1116.30   | R 3     | 92           | 99.5    |
| 108065   | 1116.40   | R 4     | 120          | 104.5   |



1116.10

**Kamlok male adapters, female threaded, Part A**

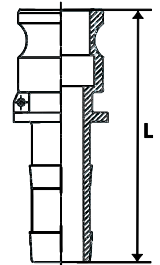
| Art. No. | Ident No. | Thread  | Plug Ø<br>mm | L<br>mm |
|----------|-----------|---------|--------------|---------|
| 108066   | 1117.34   | G 3/4   | 32           | 41.0    |
| 108067   | 1117.10   | G 1     | 37           | 50.8    |
| 108068   | 1117.114  | G 1 1/4 | 45           | 55.0    |
| 108069   | 1117.112  | G 1 1/2 | 53           | 56.0    |
| 108070   | 1117.20   | G 2     | 63           | 59.0    |
| 108071   | 1117.212  | G 2 1/2 | 76           | 79.2    |
| 108072   | 1117.30   | G 3     | 92           | 71.7    |
| 108073   | 1117.40   | G 4     | 120          | 71.2    |



1117.112

**Kamlok male adapters with hose stem, Part E**

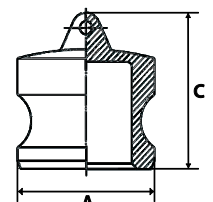
| Art. No. | Ident No. | For hose I.D. | Plug Ø<br>mm | L<br>mm |
|----------|-----------|---------------|--------------|---------|
| 108074   | 1118.34   | 19            | 32           | 85.3    |
| 108075   | 1118.10   | 25            | 37           | 100.8   |
| 108076   | 1118.114  | 32            | 45           | 109.0   |
| 108077   | 1118.112  | 38            | 53           | 123.5   |
| 108078   | 1118.20   | 50            | 63           | 142.0   |
| 108079   | 1118.212  | 63            | 76           | 150.5   |
| 108080   | 1118.30   | 75            | 92           | 157.0   |
| 108081   | 1118.40   | 100           | 120          | 166.0   |



1118.112

**Kamlok male dust plugs, Part DP**

| Art. No. | Ident No. | Size  | Plug Ø<br>mm | A<br>mm | C<br>mm |
|----------|-----------|-------|--------------|---------|---------|
| 108082   | 1119.34   | 3/4   | 32           | 32.1    | 38.0    |
| 108083   | 1119.10   | 1     | 37           | 36.6    | 52.3    |
| 108084   | 1119.114  | 1 1/4 | 45           | 45.4    | 57.5    |
| 108085   | 1119.112  | 1 1/2 | 53           | 53.4    | 57.0    |
| 108086   | 1119.20   | 2     | 63           | 63.0    | 63.5    |
| 108087   | 1119.212  | 2 1/2 | 76           | 57.7    | 67.5    |
| 108088   | 1119.30   | 3     | 92           | 91.4    | 67.5    |
| 108089   | 1119.40   | 4     | 120          | 119.5   | 69.8    |



1119.20

## Replacement seals for Kamlok couplings, NBR

| Art. No. | Ident No. | For coupling DN |
|----------|-----------|-----------------|
| 108090   | 108.101   | 20 (3/4")       |
| 108091   | 108.102   | 25 (1")         |
| 108092   | 108.103   | 32 (1 1/4")     |
| 108093   | 108.104   | 40 (1 1/2")     |
| 108094   | 108.105   | 50 (2")         |
| 108095   | 108.106   | 65 (2 1/2")     |
| 108096   | 108.107   | 75 (3")         |
| 108097   | 108.108   | 100 (4")        |



108.102

## Chains for Kamlok couplings, stainless steel

| Art. No. | Ident No. |
|----------|-----------|
| 108098   | 108.300   |



108.300